

2025-2026

ISTANBUL TECHNICAL UNIVERSITY

GRADUATE SCHOOL



itü



GRADUATE
SCHOOL



In line with the goals of academic excellence and continuous development, ITU Graduate School trains the leading researchers and experts of the future with its strong academic staff and impactful research ecosystem.

ITU Graduate School awaits its new students who will take their place in the 250-year history of ITU with nearly 200 graduate programs and more than 2000 academicians.

Discover the graduate experience at ITU now!
#GraduateAtITU



“Since 1773, ITU has represented the success of deepening knowledge, inspiring innovation through discovery, and moving humanity forward.”

INTERNATIONAL RANKINGS

Ranking
298
In World
2026



Ranking
48
In World
2025



Ranking
501-600
In World
2025



Ranking
38
In World
2024



Ranking
40
In World
2026



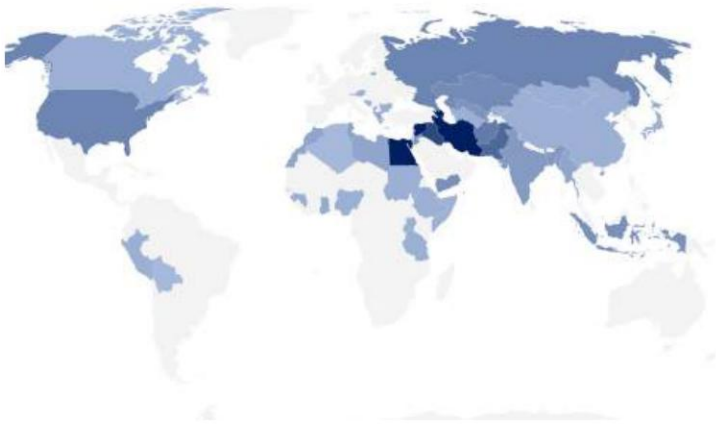
Ranking
344
In World
2026



Istanbul Technical University: Rising in Global Rankings

Istanbul Technical University (ITU) is consistently ranked high in the rankings of internationally recognized university evaluation organizations. The university's quality of education, research activities and social contribution show that it has a significant impact on a global scale. With its achievements in various fields, ITU has consolidated its place among the leading universities both in Türkiye and in the world.

Students from 52 countries

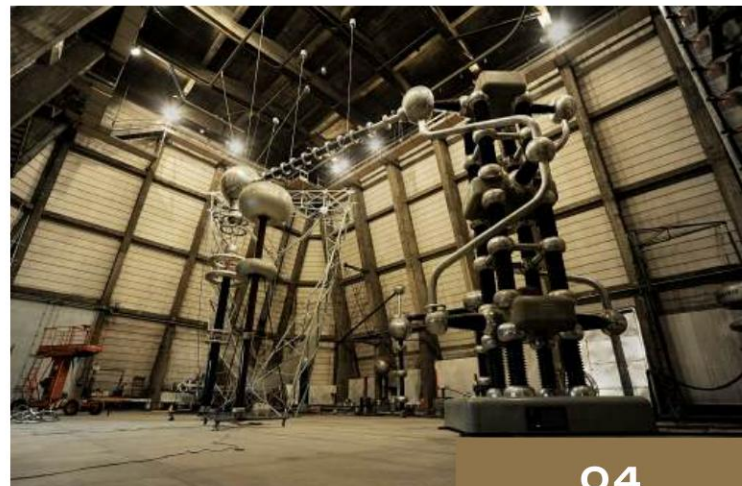


99 Master's Program

56 PhD. Program

- Strong research, laboratory, and academic infrastructure
- Up-to-date course curricula
- Extensive program portfolio
- State-of-the-art approaches and methods in education
- Extensive alumni network
- Strong campuses in the city center

10000+
STUDENTS



International Connections



The Erasmus+ KA131 Project (formerly KA103) supports student and staff exchange by promoting cooperation with higher education institutions and organisations within the programme countries.

The KA171 project is also known as the KA107 Project, formerly called ICM (International Credit Mobility). The KA171 project supports student and staff mobility between Erasmus+ program countries and partner countries (partner countries), provided there is an agreement between them.

KA131 PROGRAM COUNTRIES



KA171 PARTNER COUNTRIES



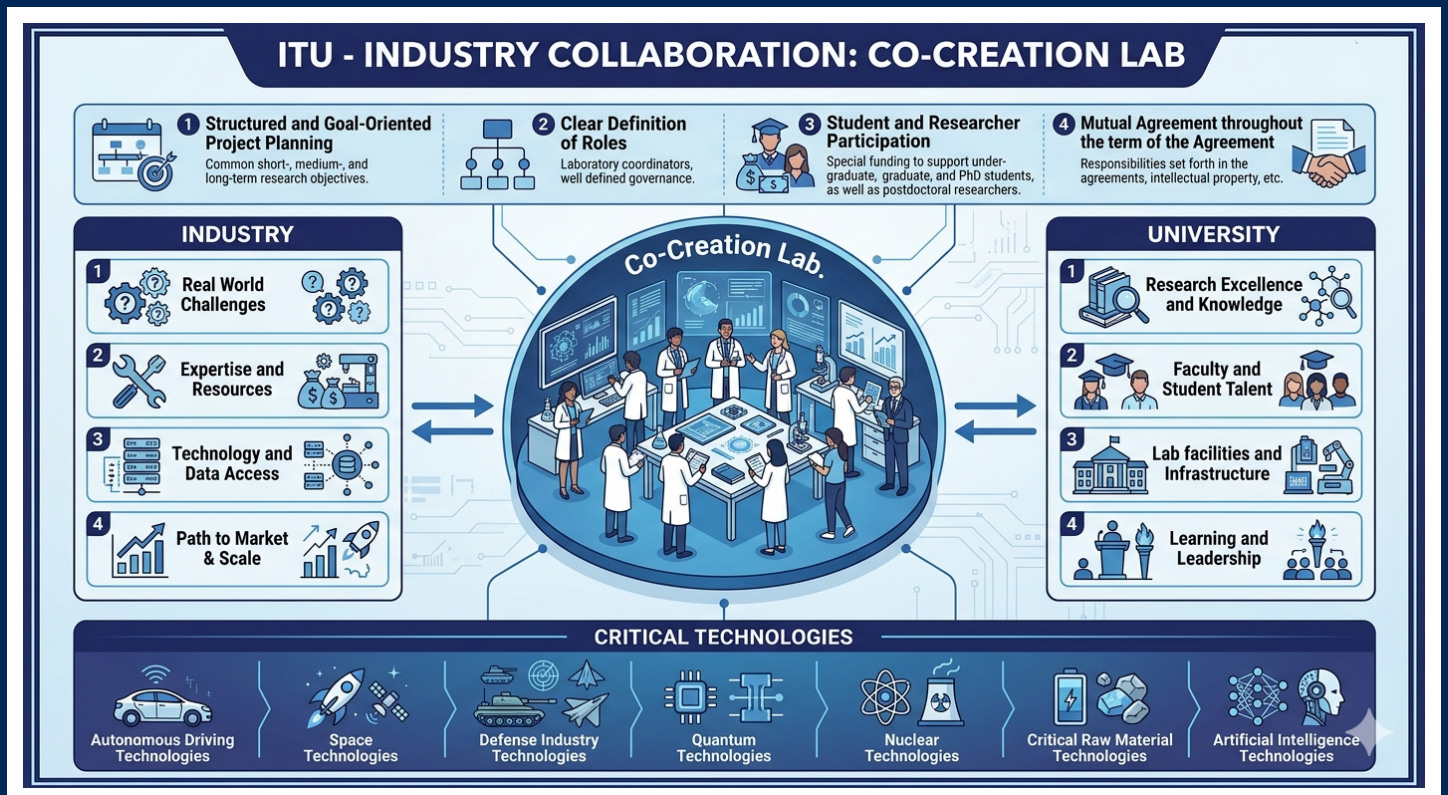
In its 251st year, Istanbul Technical University took the #GraduateExperienceAtITU one step further by becoming the first in Türkiye to receive MÜDEK accreditation for graduate education.

While Earthquake Engineering, Coastal Sciences and Engineering and Textile Engineering programs have been accredited by the Engineering Education Programs Evaluation and Accreditation Association (MÜDEK) for 2 years, we continue to work for other graduate programs within our Institute to have this accreditation.

Co-Creating the Future with ITU

Industry – University Collaboration: Co-Creation Lab

ITU's Co-Creation Lab brings industry and academia together around shared objectives — combining real-world challenges, expertise and resources from industry with research excellence, faculty and student talent, and lab infrastructure from the university.



Key Principles of the Co-Creation Lab

1. Structured & Goal-Oriented Project Planning

Common short-, medium- and long-term research objectives.

3. Student & Researcher Participation

Special funding to support undergraduate, graduate, PhD students and postdoctoral researchers.

2. Clear Definition of Roles

Laboratory coordinators, well-defined governance.

4. Mutual Agreement Throughout the Term

Responsibilities set forth in agreements, intellectual property, etc.

Critical Technologies

Autonomous Driving • Space • Defense Industry • Quantum • Nuclear • Critical Raw Materials • Artificial Intelligence

Postgraduate Application

General Application Requirements:

- **Online Application**

Applications are submitted entirely online via the Registrar's Office system:
sis.itu.edu.tr/onkayitlar/luyabanci/basvuru/

- **Application Dates (2026-2027 Fall Semester)**

April 24, 2026 (09:00) – June 26, 2026 (17:00) [UTC/GMT +3]. Applications submitted after the deadline are not accepted.

- **Document Format**

All documents must be uploaded as PDF. Each document: max 2 MB. Portfolio: max 50 MB.

- **PhD with a Bachelor's Degree**

Applicants applying to a PhD program directly after their undergraduate degree must have a minimum cumulative GPA of 3.00 / 4.00.

- **English Proficiency**

A valid English proficiency document accepted by the ITU Senate is required. See the accepted tests and minimum scores list at sis.itu.edu.tr.

For program-specific quotas, pre-conditions and requirements, please visit lee.itu.edu.tr and sis.itu.edu.tr.

Postgraduate Application

Required Documents (1/2):

1. Official Transcripts

Issued by all universities the applicant has graduated or will graduate from, including all undergraduate and/or graduate level courses and grades.

2. ALES, GRE or GMAT Score Document

Scores are valid for 5 years.

PhD applicants with a bachelor's degree: minimum ALES score of 80 (not required for Music programs).

Graduate School of Arts & Social Sciences applicants may apply with a GMAT certificate.

International student quota applicants may apply WITHOUT ALES/GRE/GMAT and receive conditional admission. Within 2 semesters they must submit the required score, OR maintain a minimum GPA of BB.

3. English Proficiency Document

Must be accepted under ITU Senate principles.

PhD: a valid certificate must be submitted by final registration; otherwise enrollment is denied.

Master's: students may register without a certificate but cannot take courses until one is submitted (within 1 year).

ITU undergraduates applying within 2 semesters of graduation may request exemption.

For the full list of accepted English tests and minimum scores, see the ITU Registrar's Office page (link below).

[→ Valid English Tests And Minimum Scores](#)

4. Statement of Purpose

A letter outlining the applicant's academic background, motivation and goals.



Postgraduate Application

Required Documents (2/2):

5. Curriculum Vitae

A current CV detailing the applicant's academic and professional experience.

6. Recommendation Letters (×2)

Two recommendation letters per applied program are required.

MSc: at least one letter from an academic instructor the student has worked with.

PhD: at least one letter from the prospective thesis supervisor.

Reference letters are uploaded to the system by the referees themselves, not by the candidate.

7. Portfolio (where required)

Required for selected programs (e.g., design and arts). The list of programs requiring a portfolio and the required portfolio content are published on the application page.

Important Notes:

- Required minimum ALES/GRE/GMAT scores and GPA may differ between Master's and PhD programs.
- Documents must be sealed, stamped and signed (or e-signed). Documents with barcodes / verification codes are also accepted.
- Applications with invalid documents will be rejected.
- After Registrar's Office approval, no changes can be made to preferences, preference order or submitted information.



Postgraduate Application

Application Schedule:

- Admission Application April 24 – June 26, 2026
- Interviews July 01 – 03, 2026
- Announcement of Results July 08, 2026
- Online Registration July 09 – 14, 2026
- Reserve Candidates Announced July 17, 2026
- Reserve Online Registration July 20 – 22, 2026

General Information:

- Applications are accepted twice a year (Fall and Spring semesters). Non-thesis evening Master's programs only accept applications in the Fall semester (on two separate dates).
- All announcements regarding applications are published on lee.itu.edu.tr.
- Applications are submitted entirely online through sis.itu.edu.tr.
- Detailed information on how to apply, upload documents, and add recommendation letters is available on the online application page.
- Information about all current Graduate Programs and previously announced application requirements can be accessed on the programs page (lee.itu.edu.tr).

Apply: sis.itu.edu.tr/onkayitlar/luyabanci/basvuru/
Information: lee.itu.edu.tr | sis.itu.edu.tr

Türkiye Scholarships



The easiest way for international applicants to become graduate students at ITU!

With Türkiye Scholarships, which has been administered by the Presidency for Turks Abroad and Related Communities of the Republic of Türkiye since 2012 and is the world's most comprehensive scholarship program, international candidates can directly enroll in more than 30 master's and over 30 doctoral programs at ITU. They also have access to round-trip airfare, health insurance, monthly scholarships, and accommodation in KYK dormitories.

With the Türkiye Scholarships program, which accepts applications every year in January and February, it is possible to become part of a big family at ITU!

-
- Computer Sciences (MSc, PhD)
 - Computer Engineering (MSc, PhD)
 - Biomedical Engineering (MSc)
 - Regional Planning (MSc)
 - Instrument - Voice (MSc)
 - Environmental Sciences Engineering and Management (MSc, PhD)
 - Electrical Engineering (MSc, PhD)
 - Electronics Engineering (MSc, PhD)
 - Industrial Engineering (MSc, PhD)
 - Physics Engineering (MSc, PhD)
 - Geomatics Engineering (MSc, PhD)
 - Food Engineering (MSc, PhD)
 - Economics (English) (MSc, PhD)
 - Business Administration (PhD)
 - Geophysics Engineering (MSc, PhD)
 - Geological Engineering (MSc, PhD)
 - Chemical Engineering (MSc, PhD)
 - Chemistry (MSc, PhD)
 - Control and Automation Engineering (PhD)
 - Mining Engineering (MSc, PhD)
 - Mechanical Engineering (PhD)
 - Material Science and Engineering (MSc, PhD)
 - Mechatronics Engineering (MSc, PhD)
 - Architectural Design (MSc, PhD)
 - Molecular Biology-Genetics and Biotechnology (MSc, PhD)
 - Music Theory and Composition (MSc)
 - Musicology (MSc)
 - Automotive (MSc)
 - Petroleum and Natural Gas Engineering (MSc, PhD)
 - Railway Systems Engineering (MSc)
 - Art History (MSc)
 - Political Studies (MSc)
 - Urban Planning (MSc)
 - Textile Engineering (MSc, PhD)
 - Telecommunication Engineering (MSc, PhD)
 - Structural Engineering (MSc, PhD)

PROGRAMS



Programs

Aeronautics and Astronautics Engineering

- Aeronautics and
Astronautics
Engineering MSc
PhD

Art History

- Art History MSc
PhD

Architecture

- Environmental
Control and
Construction
Technologies MSc
- Architectural Design
MSc PhD
- Architectural History
MSc PhD
- Project and
Construction
Management MSc
PhD
- Restoration MSc
PhD
- Construction
Sciences PhD

Business

Administration

- Business
Administration MSc
PhD

Chemistry

- Chemistry MSc PhD

Chemical Engineering

- Chemical Engineering
MSc PhD

Civil Engineering

- Hydraulics and Water
Resources
Engineering MSc PhD
- Transport Engineering
MSc PhD
- Construction
Management MSc
- Structural Engineering
MSc PhD
- Soil Mechanics and
Geotechnical
Engineering MSc PhD

Coastal Sciences and Engineering

- Coastal Sciences
and Engineering
MSc PhD



Computer Engineering

- Computer Engineering MSc PhD

Control and Automation Engineering

- Control and Automation Engineering MSc PhD

Data Engineering and Business Analytics

- Big Data and Business Analytics MSc

Economics

- Economics (English) MSc PhD

Electrical Engineering

- Electrical Engineering MSc PhD

Electronics and Communication Engineering

- Biomedical Engineering MSc PhD
- Electronics Engineering MSc PhD
- Telecommunication Engineering MSc PhD

Environmental Engineering

- Environmental Sciences, Engineering and Management MSc PhD
- Environmental Biotechnology MSc PhD





Food Engineering

- Food Engineering MSc PhD

Game and Interaction Technologies

- Game and Interaction Technologies MSc

Geological Engineering

- Geological Engineering MSc PhD

Geomatics

Engineering

- Geomatics Engineering MSc PhD

Geophysics

Engineering

- Geophysics Engineering MSc PhD

History of Science and Technology

- History of Science and Technology MSc PhD

Industrial Design

- Industrial Design MSc PhD

Industrial Engineering

- Industrial Engineering MSc PhD
- Human Resources Management MSc
- Engineering Management MSc

Informatics

- Architectural Design Computing MSc PhD

Interior Architecture

- Interior Architectural Design MSc

Landscape Architecture

- Landscape Architecture MSc PhD

Management Engineering

- Management Engineering MSc PhD

Maritime Studies

- Maritime Studies MSc PhD

Maritime Transportation Engineering

- Maritime Transportation Engineering MSc PhD

Mathematical Engineering

- Mathematical Engineering MSc PhD

Material Science and Engineering

- Material Science and Engineering MSc PhD

Mechatronics Engineering

- Mechatronics Engineering MSc PhD

Mechanical Engineering

- Heat-Fluid MSc
- Solid Mechanics MSc
- Mechanical Design MSc
- Machine Dynamics, Vibration and Accoustics MSc
- Mechanical Engineering PhD
- Materials and Manufacture MSc
- Automotive MSc
- System Dynamics and Control MSc

Metallurgical and Materials Engineering

- Materials Engineering MSc
- Metallurgical and Materials Engineering PhD
- Ceramics Engineering MSc
- Production Metallurgy and Technologies Engineering MSc

Meteorological Engineering

- Atmospheric Sciences MSc PhD

Mineral Processing Engineering

- Mineral Processing Engineering MSc PhD

Mining Engineering

- Mining Engineering MSc PhD

Molecular Biology-Genetics and Biotechnology

- Molecular Biology-Genetics and Biotechnology MSc PhD

Music

- Music MSc PhD

Musicology and Music Theory

- Music Theory and Composition MSc
- Musicology MSc
- Musicology and Music Theory PhD

Nano Science and Nano Engineering

- Nano Science and Nano Engineering MSc PhD

Naval Architecture and Marine Engineering

- Naval Architecture and Marine Engineering MSc PhD





Performance

- Instrument – Voice MSc
- Traditional Dances MSc

Petroleum and Natural Gas Engineering

- Petroleum and Natural Gas Engineering MSc PhD

Physics Engineering

- Physics Engineering MSc PhD

Polar Sciences

- Polar Sciences (English) MSc

Political Studies

- Political and Social Thought PhD
- Political Studies MSc
- **Sustainability**
- Sustainability MSc

Polymer Science and Technology

- Polymer Science and Technology MSc PhD

Railway Systems Engineering

- Railway Systems Engineering MSc

Real Estate Development

- Real Estate Development MSc

Science, Technology and Society

- Science, Technology and Society MSc

Shipbuilding and Ocean Engineering

- Offshore Engineering MSc
- Shipbuilding and Ocean Engineering MSc PhD

Solid Earth Sciences

- Geodynamics MSc PhD

Textile Engineering

- Textile Engineering MSc PhD
- Innovative Technical Textiles MSc

Turkish Music

- Turkish Music MSc

Urban Design

- Urban Design MSc

Urban and Regional Planning

- Regional Planning MSc
- Urban Planning MSc
- Urban and Regional Planning PhD



Master of Science Without Thesis Programs

*Refers to programs within the scope of second education.

Maritime Transportation Engineering

- [Management Of Maritime Transportation*](#)

Maritime Studies

- [Maritime Studies*](#)

Industrial Engineering

- [Human Resources Management*](#)
- [Engineering Management*](#)

Shipbuilding and Ocean Engineering

- [Offshore Engineering*](#)

Entrepreneurship and Innovation Management

- [Entrepreneurship and Innovation Management*](#)

**Construction
Project
Management**

- Construction Project Management*

**Occupational
Safety and Health**

- Occupational Safety and Health*

**Business
Administration**

- Business Administration (MBA-ITU-KKTC)*
- Executive Master Of Business Administration*

**Business Administration
and Technology**

- Business Administration and Technology*

Architecture

- Facade Design and Technology*
- Architecture

Music

- Music*

**Healthcare Systems
Management**

- Healthcare Systems Management

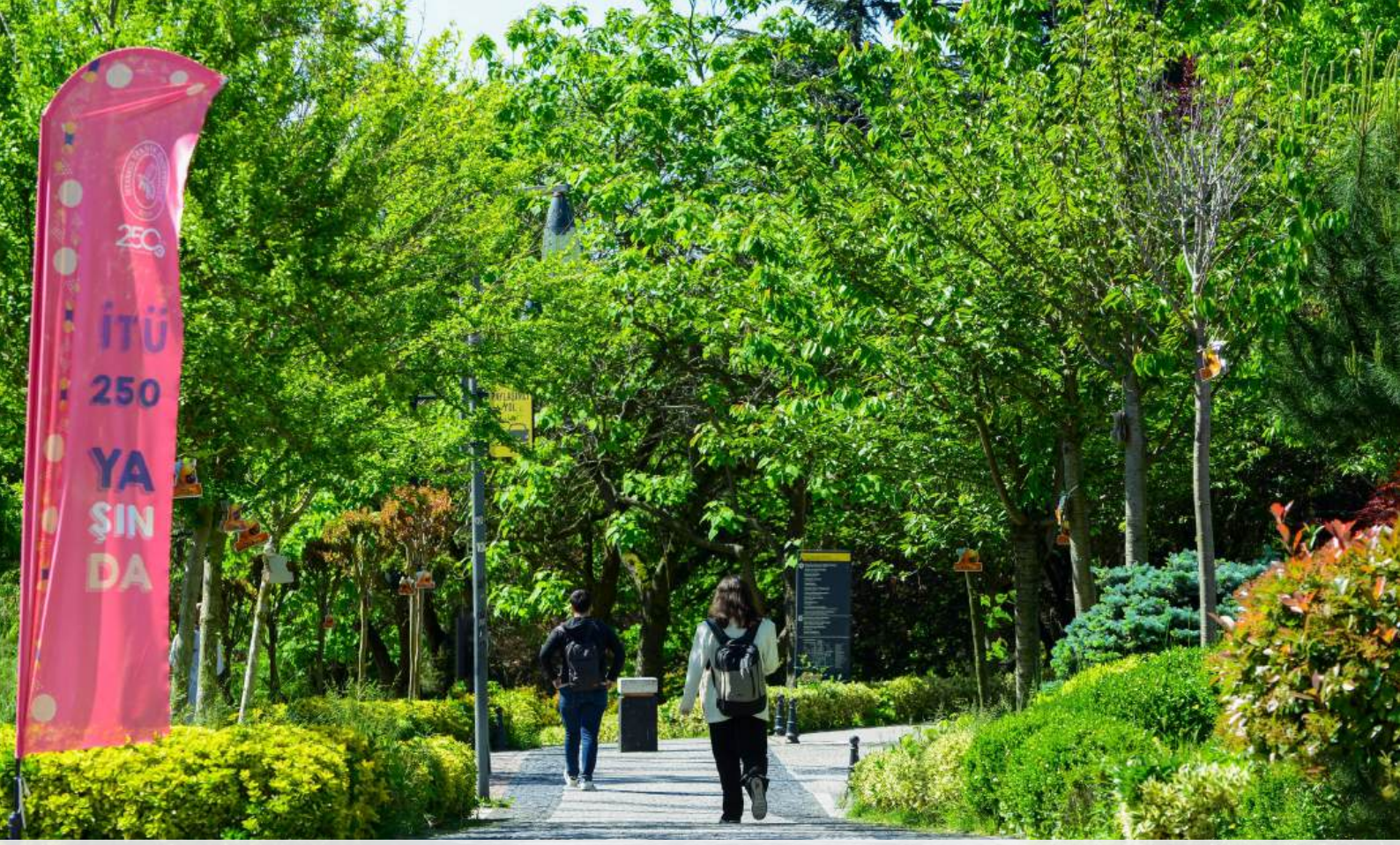
Textile Engineering

- Apparel Retail and Fashion Management*

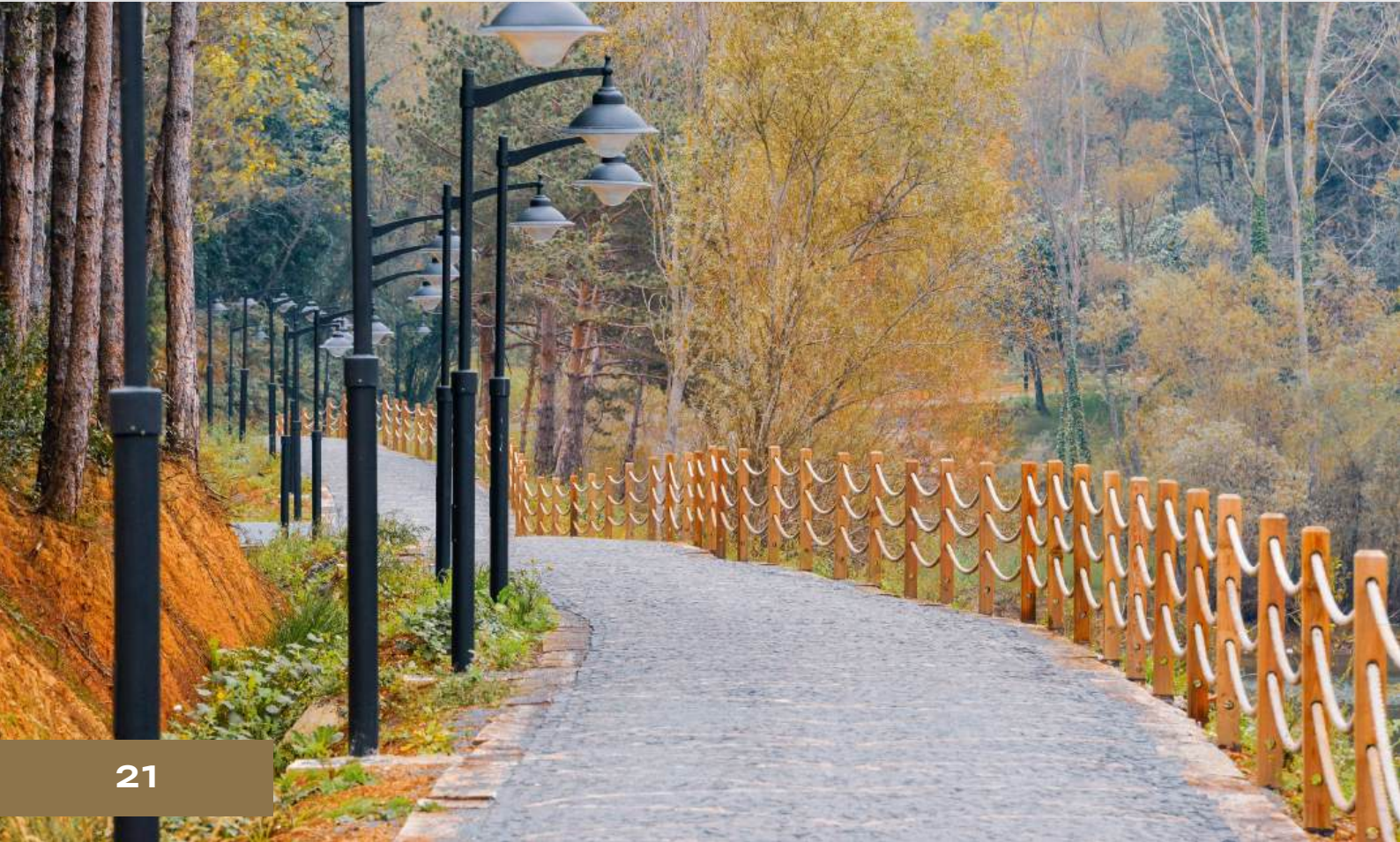
**Data Engineering and
Business Analytics**

- Big Data and Business Analytics*





LIFE ON CAMPUS





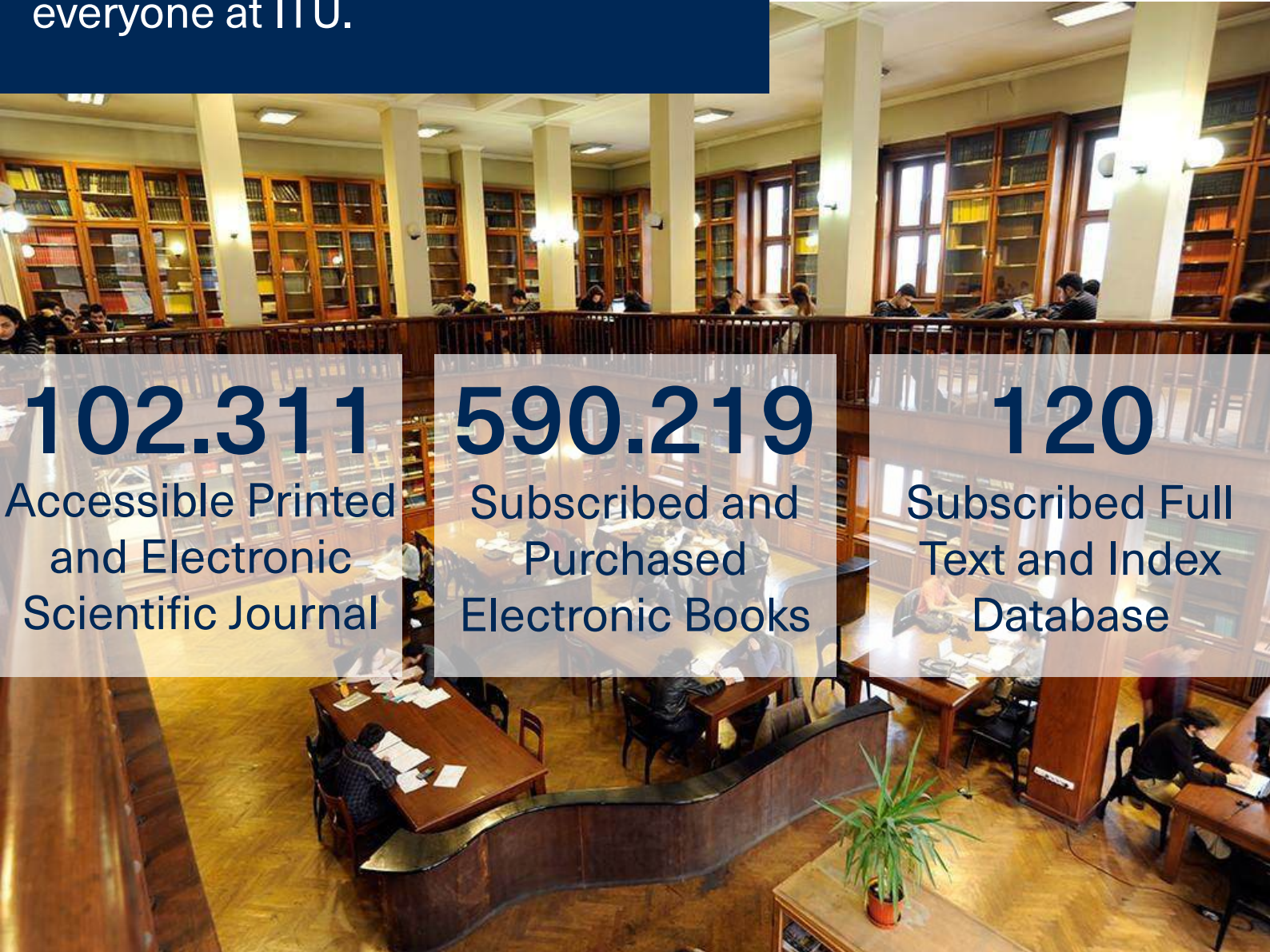
ITU isn't just about classes and research. With its five campuses, ITU offers a lifestyle that brings together nature, history, sports, art, and Istanbul in a fluent and meaningful way.

With our Green Campus approach, we integrate with nature and strive to provide an accessible campus life for all our students.



5 Campuses, 6 Libraries

We believe that a university's success is closely tied to the inspiring study environment it offers its students. The atmosphere, facilities, and system of our libraries are designed to maximize the motivation of everyone at ITU.



102.311

Accessible Printed
and Electronic
Scientific Journal

590.219

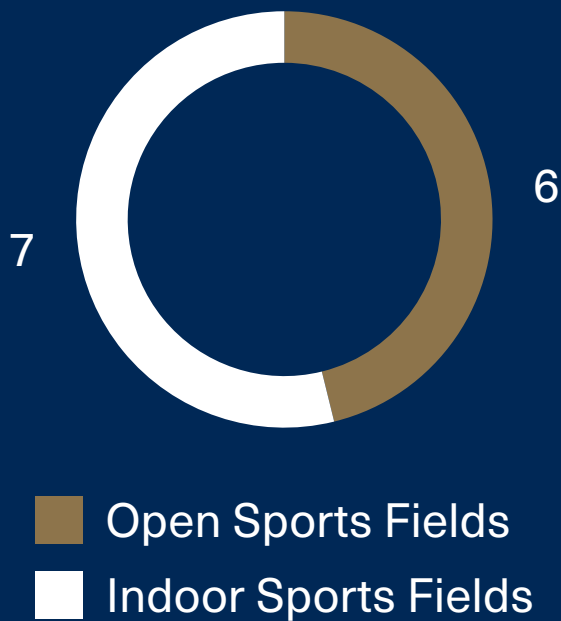
Subscribed and
Purchased
Electronic Books

120

Subscribed Full
Text and Index
Database

Sports at ITU

ITU sees sports as an essential part of a healthy lifestyle and proudly supports its athletes to success every season with the opportunities it provides for both individual and team sports.





Useful Links

[ITU Graduate School](#)

[ITU Student Affairs](#)

[ITU Psychological Counseling and Guidance Service](#)

[ITU Career Center](#)

[ITU Library](#)

[ITU Sports Services](#)



ITU



GRADUATE
SCHOOL

lee.itu.edu.tr

[instagram.com/itulisansustu](https://www.instagram.com/itulisansustu)

x.com/itulisansustu

